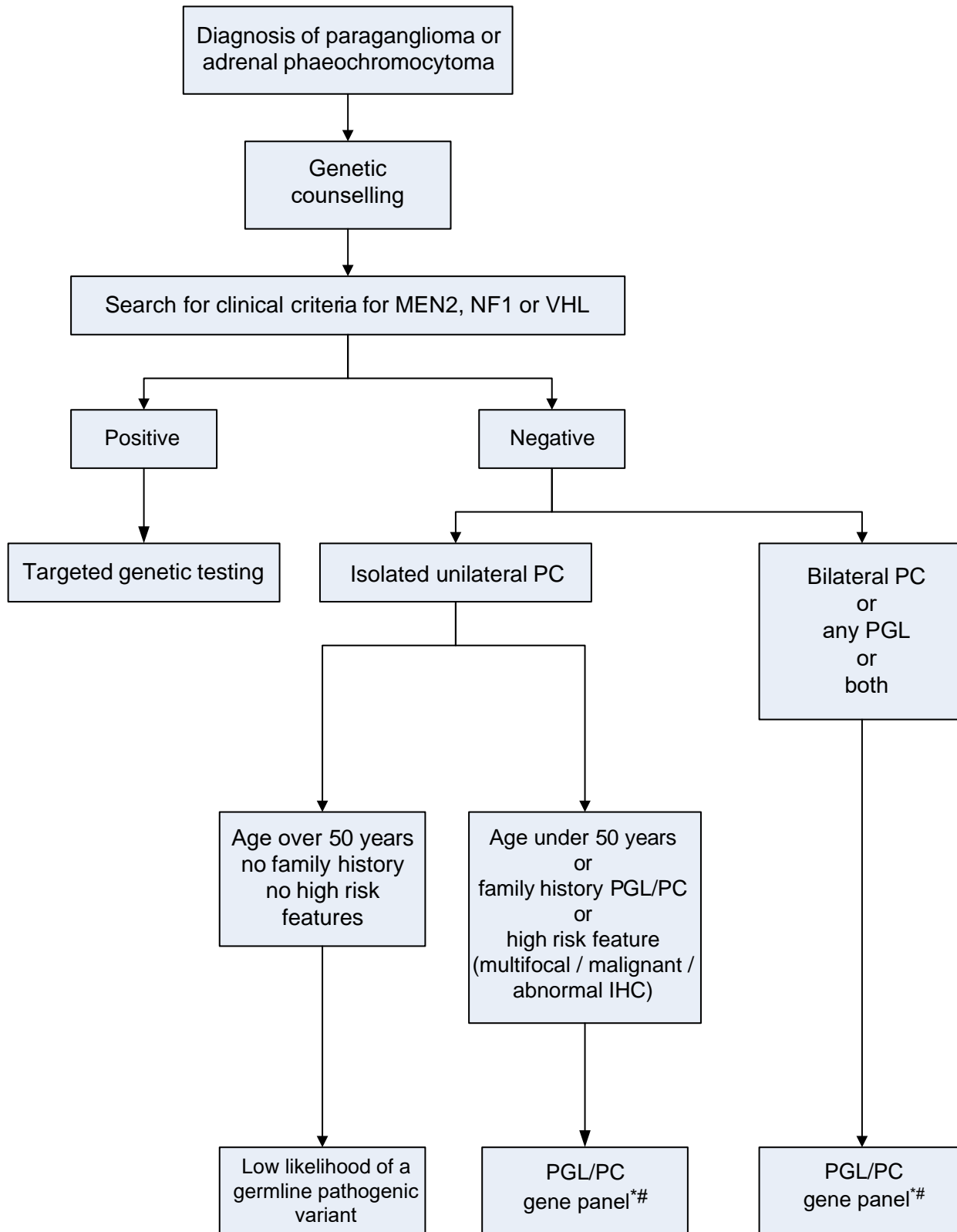


Genetic testing algorithm: paraganglioma-phaeochromocytoma genes



* When choosing the genes to include in a PGL/PC gene panel, care should be taken to select genes which have both clinical validity and clinical utility for PGL/PC.

There is evidence that the pattern of plasma/urine metanephrine, normetanephrine and 3-methoxytyramine secretion varies with the gene involved. Loss of immunohistochemical expression of SDHB and SDHA is more common in SDHx mutated tumours compared to non-mutated tumours and tumours with mutations in other genes. These screening tests may be useful for prioritising which genes to include in an individual patient's panel test.

Abbreviations :
IHC = SDHB and/or SDHA immunohistochemistry
PC = adrenal phaeochromocytoma
PGL = extra-adrenal paraganglioma